

Sheltered Modernisation News

A newsletter for sheltered housing residents

Issue 8 • July 2019



Improvement works begin at Concord

June saw the start of the work at Concord in Nailsworth, this is the second sheltered housing scheme to be modernised as part of the Sheltered Modernisation Programme. The main improvements to the scheme include: a redesigned communal lounge & kitchen, a new entrance with automatic door & seating area, updated laundry, creation of a Health & Wellbeing room, the installation of a lift and fob access throughout the scheme. Other improvements include provision for scooters, refurbishment of patio areas, redecoration to brighten up the corridors and new furniture in the various communal areas.

We are pleased to announce that Beard Construction (who you will remember also carried out the improvement works at Sherborne House) were the successful contractors in procuring the work at Concord.

We are delighted to be continuing our partnership with Beard following the success of the previous project.

The works are due to complete in October - in time for the residents' 50th anniversary celebrations of the opening of Concord in 1969.

Turn over for
news about
Tanners Piece
opening!



New building at Tanners Piece open for occupation

Just as the modernisation works were beginning in one area of Nailsworth, at Concord, construction work was finishing on schedule on the eleven new apartments at Tanners Piece.

Stroud District Council has invested £1.5 million in creating this new, fit for the future, accommodation for older people. Research has been carried out as to what is important to people as they get older (see 'Older Peoples Housing Strategy' – page 4) and the results have been incorporated into the design of the new building. Examples of this include level access showers, scooter storage (see picture on the right),

high level thermostats on the radiators, adequate parking and maintaining a community of people of a similar age.

The building was formally opened on June 20th at an event attended by many key stakeholders. Local residents, who have been impacted by the works, and former tenants of the site, who are not returning, were also given the opportunity to look around the building prior to it being occupied.

Nine of the apartments were advertised on HomeseekerPlus, the other two are being occupied by tenants who have chosen to return to the site of their former homes (see right for comments).

'It's a great scheme that's going to provide superb homes, fit for the future.'

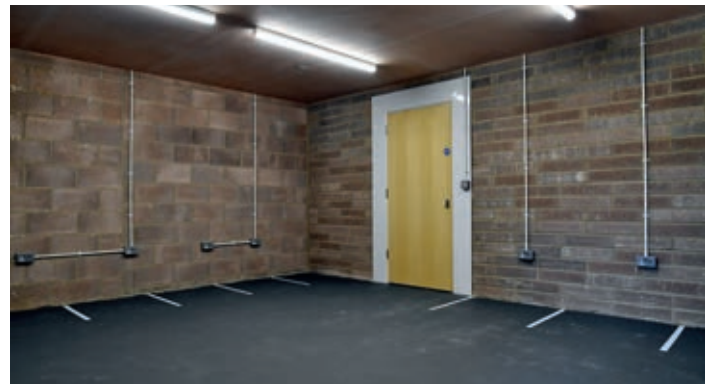
**Cllr Chas Townley
Chair of Housing Committee**



“Spacious, feels safe and secure - I loved it as soon as I walked in!”



“Very nice and big, I’m impressed with the bathroom and the Juliet balcony with nice views over Nailsworth.
Also being near to the chip shop and the centre of town.”



Official ribbon cutting by Chair of Stroud District Council – Gary Powell and Deputy Mayor of Nailsworth Town Council – Mike Kelly.

Local Updates

Cam/Dursley

Chris Eadie, our Tenant Liaison Officer, has continued to work with tenants at **Cambridge House** and **Glebelands** to find them new homes where they are happy to move. This work is progressing well and only a handful of residents across the two schemes have yet to find properties.

Stonehouse

We are continuing to talk with the residents at **Willow Road** as we move towards a decision on the future of their scheme. As part of this process a recent questionnaire was conducted individually with the residents to make sure we have a clear picture of their views. Consultation has also taken place with Ward Councillors, members of the Housing Committee and colleagues from across the council, a recommendation is expected to go to the next Housing Committee meeting in September.

Minchinhampton

George Pearce House is the next sheltered housing scheme to be modernised with works planned for later this year. We now have both an architect and contractor in place and will be visiting the tenants in Minchinhampton very soon to provide an update on progress.

Nailsworth

Due to recent changes in funding announced by government, Stroud District Council has made the decision to retain the site at **Ringfield Close** and redevelop the area for affordable housing, which will be owned and managed by the council. A public consultation was held in April to gain input from local residents on the design and layout of the proposed development. A second consultation was held in July so residents could see how their comments had informed the design, a planning application has now been submitted.

Older People's Housing Strategy

Running alongside the modernisation programme, colleagues at the council have been working on a strategy for our older people's housing. This strategy has been approved by Housing Committee and sets out our future vision for our 'Independent Living' accommodation.

The modernisation works will reflect the strategy which is built around information gathered from a recent survey of 500 residents of the Stroud district, along with

other research and investigations into 'best practice' across the housing and care sectors. Consultation will be carried out with tenants over the next 12-18 months to discuss the strategy and what this may mean for them.

The strategy is available to view on the council website by going into 'Housing' and looking at the bottom of the page in the 'Housing Strategy' section.

NEXT ISSUE OUT EARLY NEXT YEAR