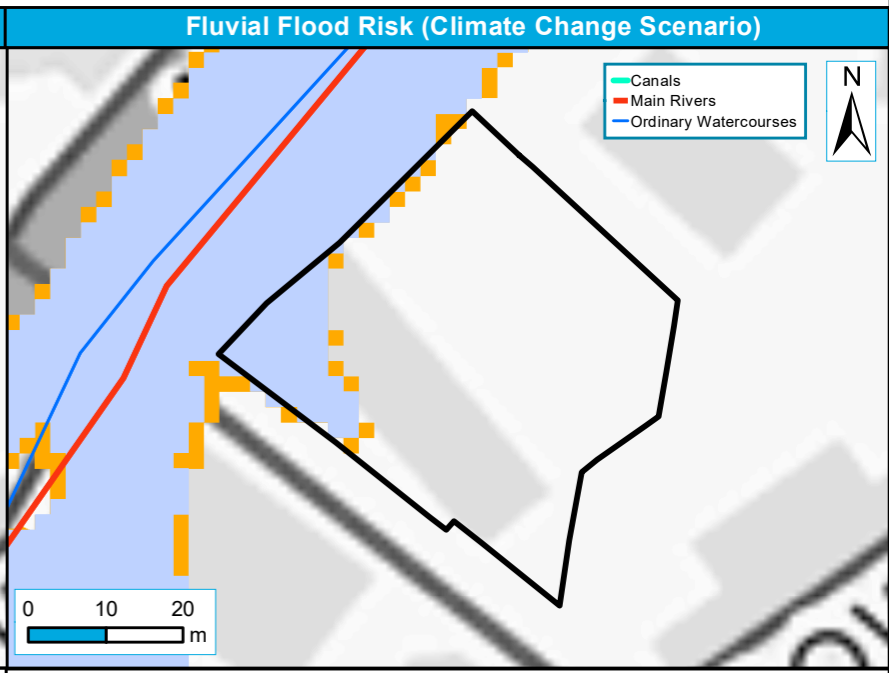
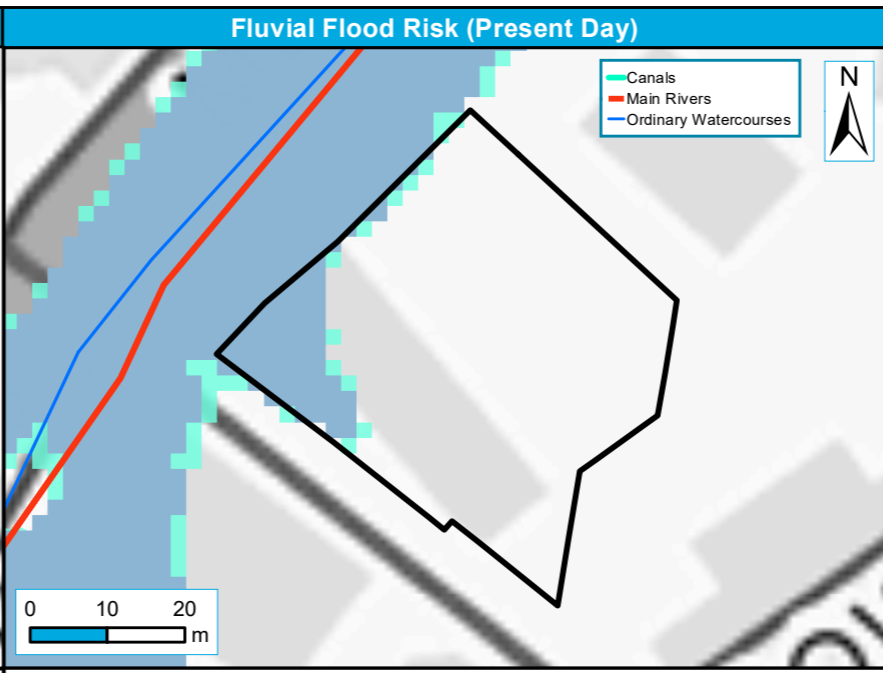
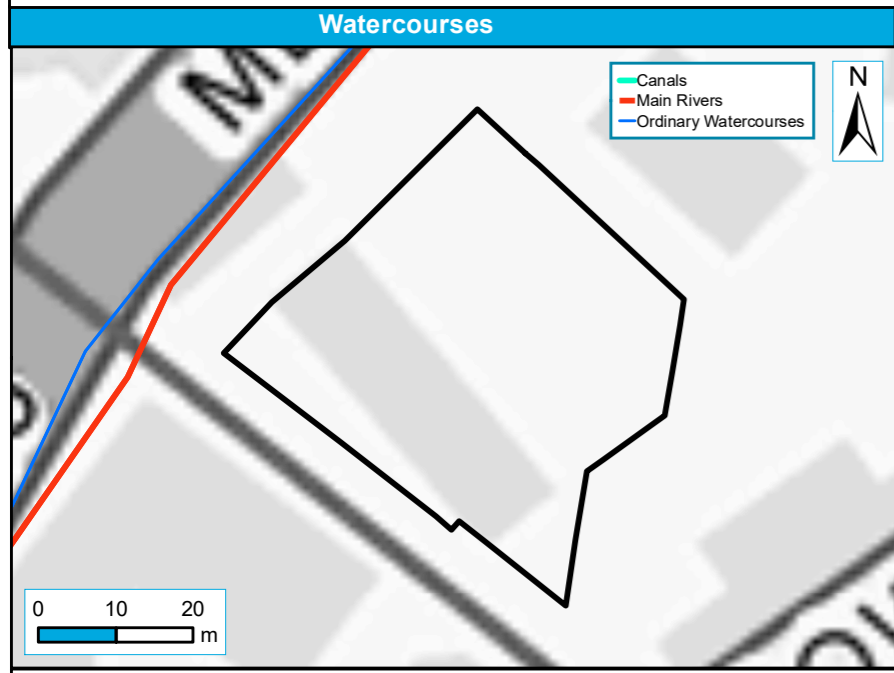


Site reference	PS11
Site Name	Merrywalks Arches, Merrywalks, Stroud

Stroud District Council Strategic Flood Risk Assessment Level 2 Detailed Site Summary Tables



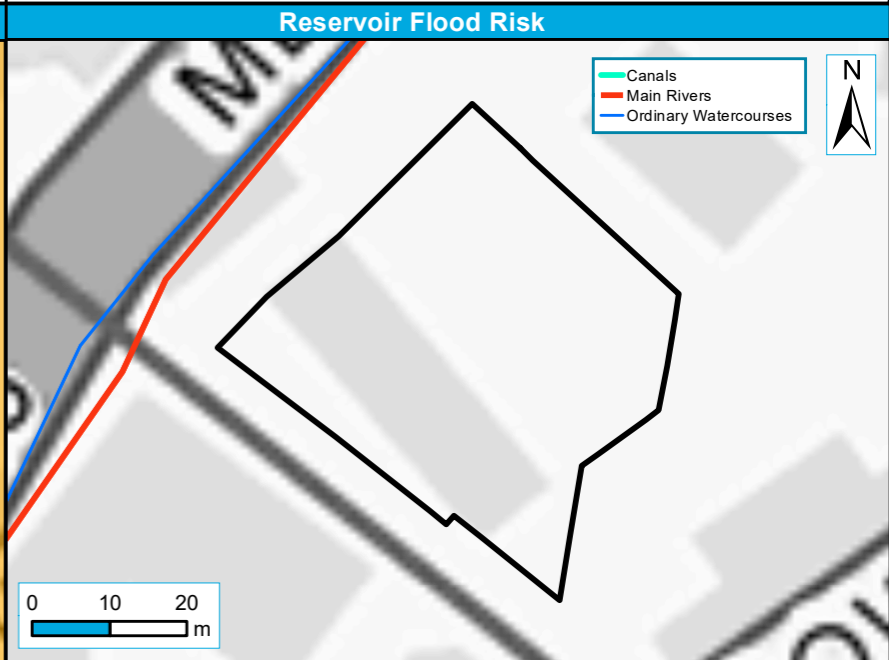
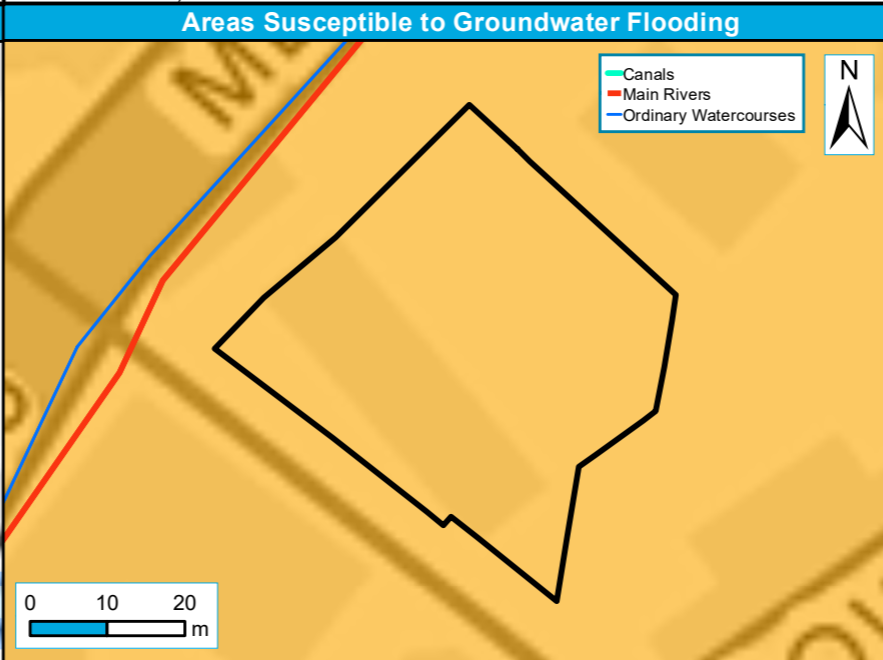
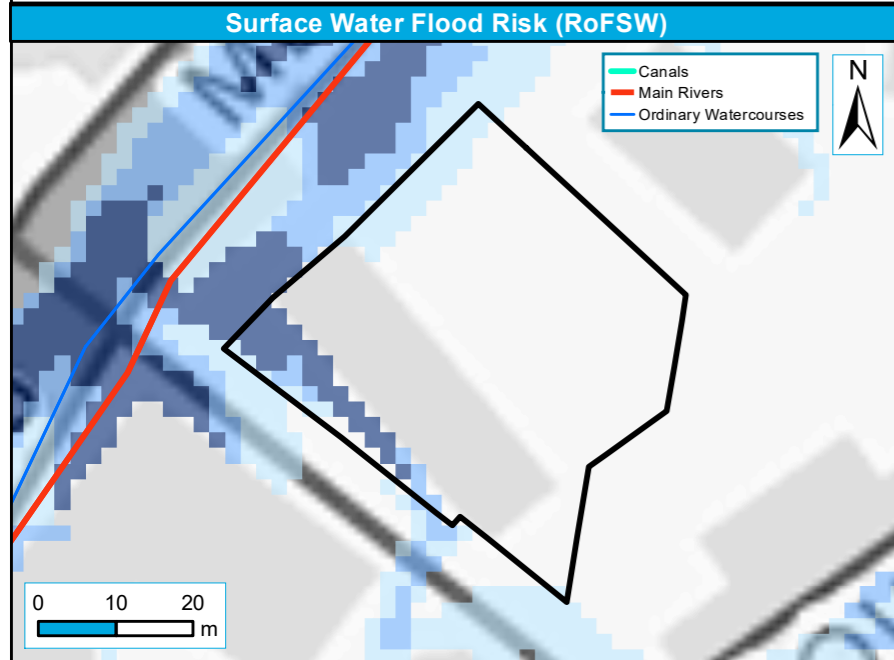
Contains Ordnance Survey data © Crown copyright and database right 2019. Contains public sector information licensed under the Open Government Licence v3.0.



Site Boundary
— Main Rivers
— Canal
— Ordinary Watercourses

Functional Floodplain (1 in 20-year or 25-year event where available, or 1 in 100-year where not)
 1 in 100-year (1% AEP)
 1 in 1,000-year (0.1% AEP)

1 in 100-year (1% AEP)
 1 in 100-year (1% AEP) + 35% CC
 1 in 100-year (1% AEP) + 70% CC
Where detailed model not available, 1 in 1,000-year (0.1% AEP) has been used as a proxy for Flood Zone 3a + CC.



Level 2 Sites
 RoFSW 1 in 30-year extent (3.3% AEP)
 RoFSW 1 in 100-year extent (1% AEP)
 RoFSW 1 in 1000-year extent (0.1% AEP)

Level 2 Sites
Areas Susceptible to Groundwater Flooding
 < 25%
 >= 25% < 50%
 >= 50% < 75%
 >= 75%

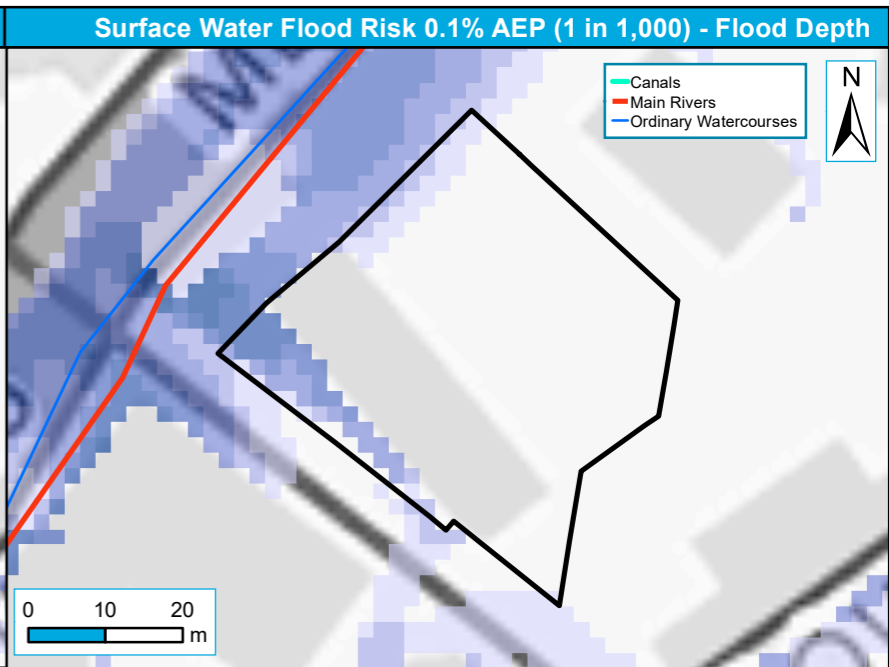
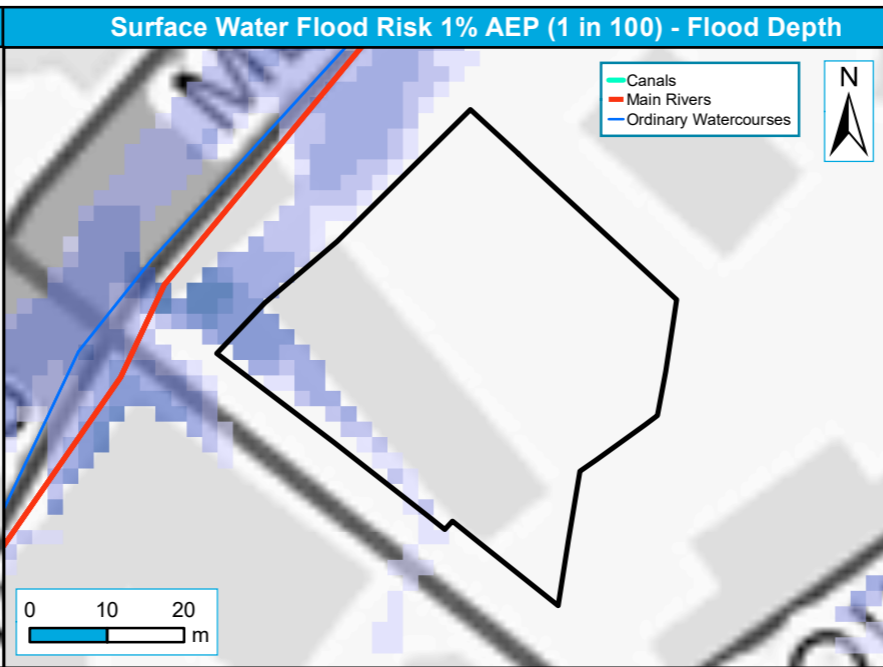
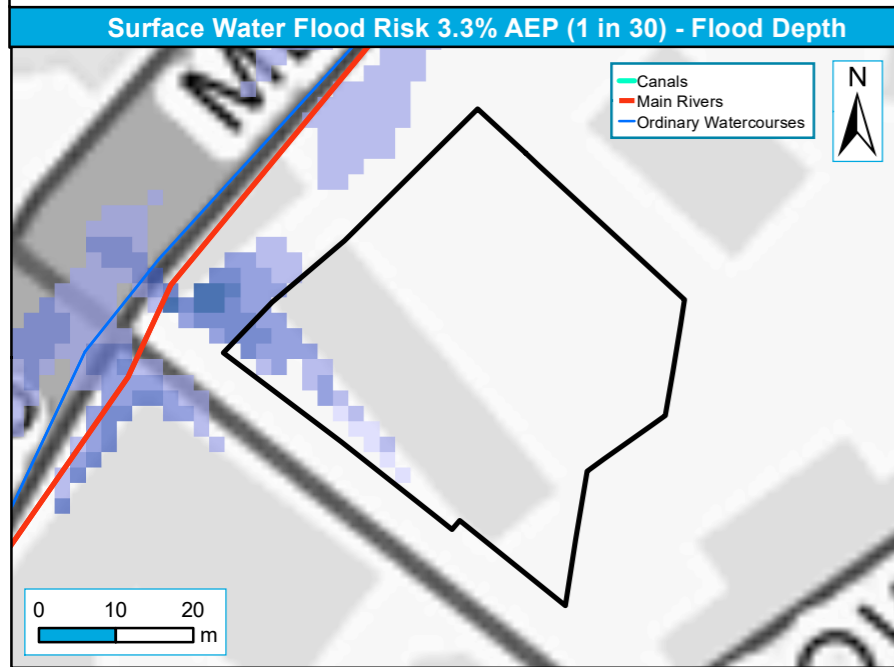
Level 2 Sites
 Reservoir Flood Risk

Site reference	PS11
Site Name	Merrywalks Arches, Merrywalks, Stroud

Stroud District Council Strategic Flood Risk Assessment Level 2 Detailed Site Summary Tables



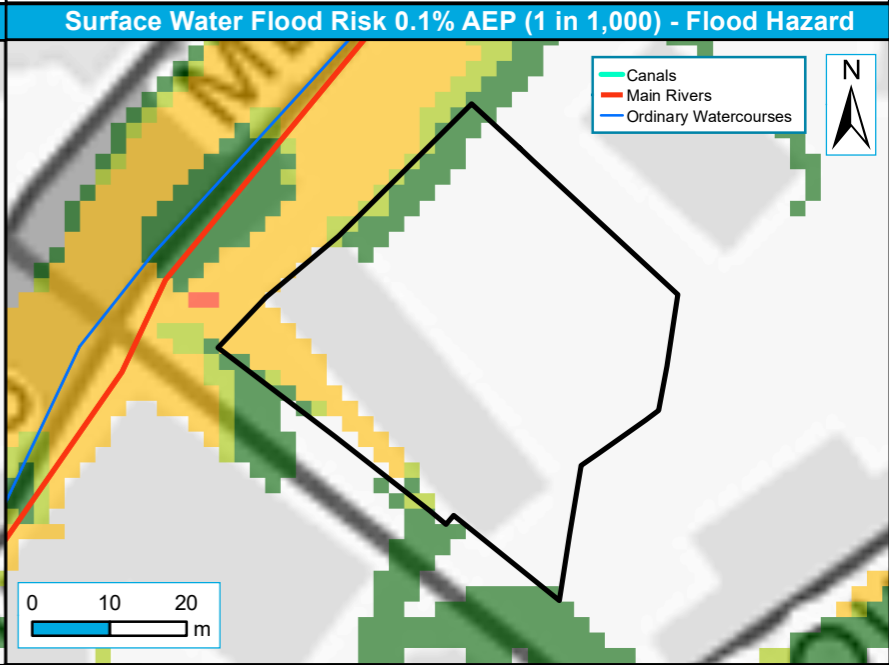
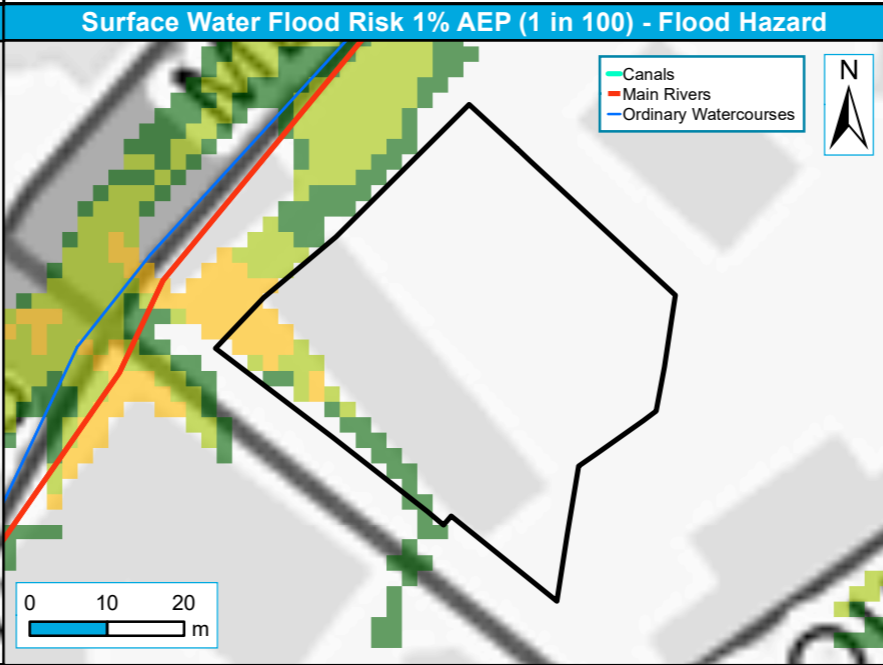
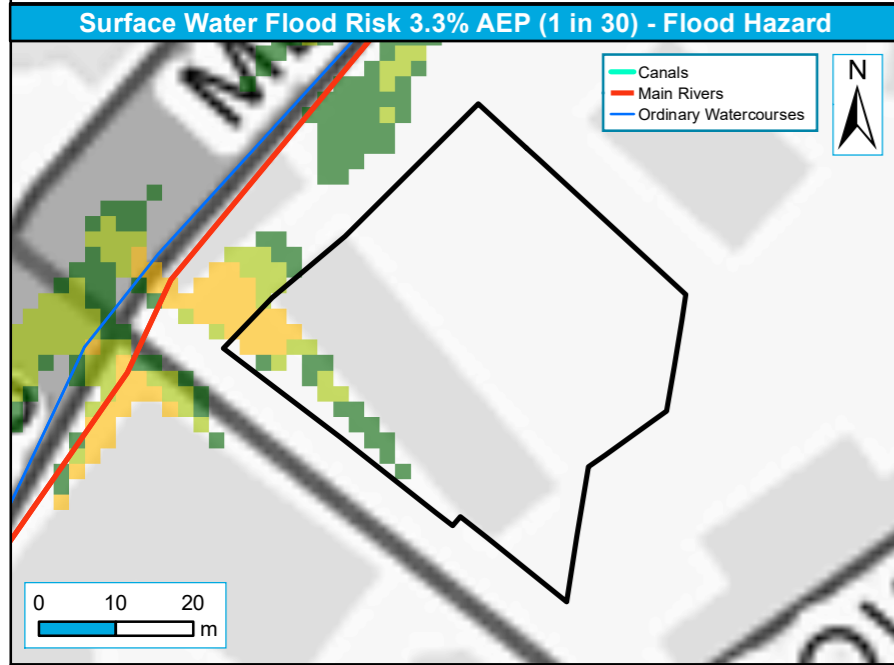
Contains Ordnance Survey data © Crown copyright and database right 2021. Contains public sector information licensed under the Open Government Licence v3.0.



Level 2 Sites	Depth (m)	0.15 - 0.30	0.30 - 0.60	0.60 - 0.90	0.90 - 1.20	> 1.20
Level 2 Other Sites		0.00 - 0.15	0.30 - 0.60	0.60 - 0.90		

Level 2 Sites	Depth (m)	0.15 - 0.30	0.30 - 0.60	0.60 - 0.90	0.90 - 1.20	> 1.20
Level 2 Other Sites		0.00 - 0.15	0.30 - 0.60	0.60 - 0.90		

Level 2 Sites	Depth (m)	0.15 - 0.30	0.30 - 0.60	0.60 - 0.90	0.90 - 1.20	> 1.20
Level 2 Other Sites		0.00 - 0.15	0.30 - 0.60	0.60 - 0.90	0.90 - 1.20	> 1.20



Level 2 Sites	Hazard	0.50 - 0.75: Very low	0.75 - 1.25: Moderate	1.25 - 2.00: Significant	> 2.00: Extreme
Level 2 Other Sites		0.50 - 0.75: Very low	0.75 - 1.25: Moderate	1.25 - 2.00: Significant	> 2.00: Extreme

Level 2 Sites	Hazard	0.50 - 0.75: Very low	0.75 - 1.25: Moderate	1.25 - 2.00: Significant	> 2.00: Extreme
Level 2 Other Sites		0.50 - 0.75: Very low	0.75 - 1.25: Moderate	1.25 - 2.00: Significant	> 2.00: Extreme

Level 2 Sites	Hazard	0.50 - 0.75: Very low	0.75 - 1.25: Moderate	1.25 - 2.00: Significant	> 2.00: Extreme
Level 2 Other Sites		0.50 - 0.75: Very low	0.75 - 1.25: Moderate	1.25 - 2.00: Significant	> 2.00: Extreme