

Independent Living Modernisation News

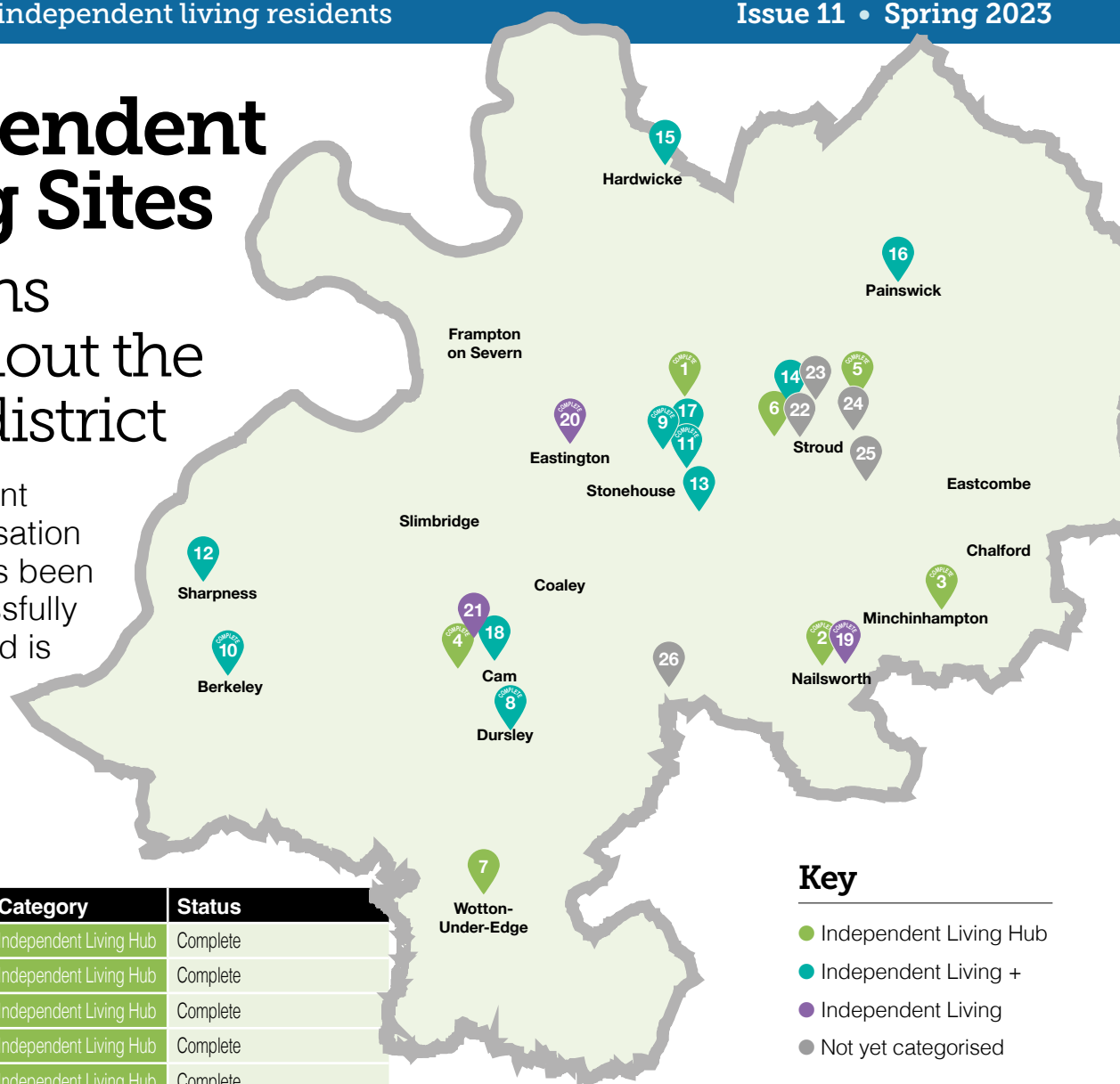
A newsletter for independent living residents

Issue 11 • Spring 2023

Independent Living Sites

Locations throughout the Stroud district

The Independent Living Modernisation programme has been running successfully for six years and is anticipated to complete by 2026.



Key

- Independent Living Hub
- Independent Living +
- Independent Living
- Not yet categorised

Scheme	Category	Status	
1	Sherborne House	Independent Living Hub	Complete
2	Concord	Independent Living Hub	Complete
3	George Pearce House	Independent Living Hub	Complete
4	Springfields Court	Independent Living Hub	Complete
5	Grange View	Independent Living Hub	Complete
6	Walter Preston Court	Independent Living Hub	Will be completed in 2023/24
7	Dryleaze House	Independent Living Hub	Not yet complete
8	Vizard Close	Independent Living +	Complete
9	Willow Road	Independent Living +	Complete
10	Jenner Court	Independent Living +	Complete
11	Burdett House	Independent Living +	Complete
12	Hamfallow Court	Independent Living +	Works due to start imminently.
13	The Beeches	Independent Living +	Will be completed in 2023/24
14	Archway Gardens	Independent Living +	Will be completed in 2023/24
15	St Nicholas Court	Independent Living +	Not yet complete
16	Ashwell House	Independent Living +	Not yet complete

Scheme	Category	Status	
17	Hazelwood	Independent Living +	Not yet complete
18	The Corriett	Independent Living +	Not yet complete
19	Tanners Piece	Independent Living	Complete
20	Broadfield Road	Independent Living	Complete
21	Glebelands	Independent Living	N/A (No Communal Facilities)
22	Malvern Gardens	Not yet categorised	Not yet complete
23	Chapel Lane	Not yet categorised	Not yet complete
24	Grove Park Road	Not yet categorised	Not yet complete
25	Draycott	Not yet categorised	Not yet complete
26	Ashcroft House	Not yet categorised	Not yet complete

Independent Living categories

A brief reminder of the three types of Independent Living scheme is shown below. More information can be found on the SDC website, just go to the 'Housing' section, and follow the link titled 'Housing Strategy', the 'Older People's Housing Strategy' is at the bottom of the page.

Independent Living Hub

HUB

The Hubs have a communal lounge that can also be used for activities which are open to visitors from other schemes as well as the wider community. These activities could include such things as health clinics, exercise classes, educational activities and social events. The Hubs sit at the centre of the Independent Living community, providing a place where different partners in a community can come together and address issues that matter most to them. The Hubs also benefit from the provision of scooter stores wherever possible.

Independent Living Plus

IL+

These schemes also have a communal lounge but these are generally smaller and predominantly for the use of those living on the scheme and their family, friends and support network. However, they can also be used as 'Satellite Hubs', whereby activities from the Hubs may be extended and take place within them, allowing more people to benefit.

Independent Living

IL

These schemes will not have their own communal lounge, however residents will have the opportunity to use the facilities at both the Hubs and the Independent Plus schemes. They will also have the opportunity to socialise in and access the various activities should they wish to. This will allow residents to live independently with as much or as little support as needed.



If you do not have access to the internet and would like more information, please contact us **01453 766321**

Completed Schemes

The team has been hard at work since the last newsletter, with four schemes completed and planned improvements to the next phase of schemes underway.

Vizard Close, Dursley

Work at Vizard Close completed in November 2021 and was the second of our Independent Living Plus schemes to be modernised.



IL+

The modernisation work consisted of the refurbishment of the laundry, redecoration of the communal entrance, removal of the little used guest room in order to create a larger open plan kitchen and lounge which is much more versatile. Residents have enjoyed using their new communal space for a variety of different events.

Jenner Court, Berkeley

Jenner Court was the third Independent Living Plus scheme to be modernised and was completed in March 2022. This modernisation was slightly different to our previous schemes as, due to the levels, the kitchen and the lounge were not able to be combined into one open space. Despite this, the lounge has still increased in size due to the removal of various cupboards and a full redecoration. This scheme also benefitted from a larger laundry area as well as the addition of an external canopy meaning residents are able to enjoy their outside space for more of the year. >>>



IL+

Additional properties at Independent Living Site

Broadfield Road, Eastington

Work completed at Broadfield Road in April 2022, creating an additional 9 energy efficient bungalows to add to the existing 20 bungalows at this Independent Living scheme. All new homes achieved an Energy Performance Certificate 'A' rating.

Works included the demolition of the former scheme manager's flat and communal building.

Additional improvements to the scheme included the provision of a wildflower meadow and lower fencing around the boundary allowing residents to appreciate the views.



IL



Completed Schemes



Grange View, Uplands, Stroud

Grange View was the fifth Hub to be modernised. Works were completed in October 2022 and included the installation of scooter stores and charging facilities, updating the guest rooms and refurbishment of the kitchen and lounge to create a large open space, with the addition of a canopy to enable residents to use the patio space for more of the year.

"We were kept very well informed, and always knew what stage they were at with the work"

"Beard were very helpful, nothing was too much trouble"

"The Site Manager was very approachable and took time to answer any questions"

"Beard were very considerate to our needs, and we felt listened to"



Burdett House, Stonehouse

Burdett House was the fourth Independent Living Plus scheme to be modernised and work is now complete.

We are pleased to announce that Beard Construction, which carried out modernisation works at all of our completed schemes, was the successful contractor in bidding for the work at Burdett House. We are delighted to be continuing our partnership with them following the success of the previous projects.

Work included major improvements to the layout of the lounge and kitchen, updates to the laundry, refurbishment of the guest room as well as full refurbishment of the corridors including the installation of a door entry system which allows door fob access across the site.

Coming soon...



Hamfallow Court, Berkeley

The first consultation has been held with residents to discuss their 'wish list' and to choose their preferred colour scheme.

The majority voted for the 'Rust' mood board which blends vibrant copper tones with calming grey colours. This colour scheme will be used across the new

furniture, furnishings, decoration and artwork creating a positive and uplifting environment in the communal lounge.

Work at this scheme will consist of the removal of the office and the wall between the kitchen and lounge to create one large open space; the laundry will also be refurbished; and the salon converted into a health and wellbeing room.



Schemes for 2023/24

The team will be writing to residents in the next few months in order to start our consultation process. As with the other schemes already modernised, we will be asking the residents for their 'wish list'. Although we can't promise to deliver everything that residents might want, we certainly take your views into account and do what we can to include your comments into our designs.

Walter Preston Court, Cashes Green, Stroud (Hub)

The Beeches, Kings Stanley (Independent Plus)

Archway Gardens, Paganhill, Stroud (Independent Plus)

Laundry at Sherborne House, Stonehouse
Sherborne House was our first scheme to be modernised but the laundry was not part of the original plans at the time. We have since incorporated laundries into all of our schemes and as a result will be returning to complete the Sherborne House laundry in the next year.

HUB

Independent Living Hub Facilitator Update

Through the Independent Living Modernisation Programme we have created 5 Hubs which have enabled and encouraged residents and the community to engage with each other, learn new skills. Working in partnership with scheme residents and various organisations has been fundamental in evolving the Hubs and achieving some great outcomes.

Listening and encouraging residents is how we start to build relationships to find out what they would like to see happening and what part they would like to play. Through these conversations residents welcomed the idea of inviting the community in to share their space.

Overleaf is an overview of what is happening in each of the Hubs, there have also been lots of other courses and events as well as those I have mentioned. Hopefully this has helped reduce isolation and improve wellbeing and will continue to do so.

"We were apprehensive at first. We wondered how many 'outsiders' would be arriving and invading our space when Concord became a Hub! However, it wasn't like that at all, all the people who came, are people who live close by, or come from other Independent Living Sites. They come to coffee or courses and events too. Residents are happy with this, and it's brought a real community feel to Concord, and it has helped me get my social life back!"

(Resident from Concord, Nailsworth)

For further information regarding the Hubs, please contact Katherine Allen, Independent Living Hub Facilitator on: 07792 420069 or katherine.allen@stroud.gov.uk

Springfields, Cam

Springfields, Cam is another busy Hub. The social committee arrange events and have set up their own Hub, tea/coffee facility, with a donations box to keep it running sustainably. This works well to create a welcoming space to have a hot drink and a chat. Running alongside this they have a weekly café club, craft group, darts, and games. There is a weekly art group, DIY course, and they have had digital awareness sessions. The Invisible illnesses group meet at the Hub weekly offering support and mindfulness sessions. The Hub also works in partnership with the Quarry Chapel Hub, who are using Springfield whilst their facilities are being upgraded. Which is great partnership working to share resources that benefit the community.



Sherborne House, Stonehouse

Sherborne House (Stonehouse) is a busy Hub. The Social Committee arrange meals, events, gardening grants, coffee mornings and quizzes. Members have applied for funding for a larger cooker, to enable them to offer meals to larger groups. There are weekly art classes, digital training sessions, meditation, and bingo. Sherborne Hub offers a great space for other groups to meet, such as, the Visually Impaired Club, Craft and Stitch, Managing Memory. The weekly Day Centre on Wednesdays is hugely successful, thanks to the volunteers that work so hard to make it a fun, vibrant place to be. "As a volunteer for a busy community Hub Day centre, where anyone is welcome to join in, this has huge benefits for those who are feeling the effects of social isolation. Its time spent with others either taking part in activities or just having tea and lunch. This brings people together and leads to trust and friendship. The benefits of this can have a positive ripple effect



on everyone, giving them a purpose to their day. As a volunteer I often reflect when I come home after a busy day at the centre, hearing laughter, listening to spontaneous singing from the whole group when a popular song comes on. This also gives me a sense of joy that maybe just maybe, this valuable role within the community and being able to be a part of it makes a difference to someone's day is an honour that I also enjoy." **(Volunteer from Hazelwood, Stonehouse)**



George Pearce House, Minchinhampton

The Social Committee at George Pearce House Hub (GPH) in Minchinhampton has used some money raised through funding secured by their original treasurer, to have a defibrillator installed, which is a great asset for them and the community. This has sparked some interest into wanting a first aid course, to learn basic first aid skills, and how to use a defibrillator. I am in the process of arranging this. The committee regularly arrange social events which are very successful and enjoyed by many. There is also weekly bingo, coffee mornings, art class and a digital champion on hand to help with any digital support. Stroud College students will also be visiting soon to offer manicures, as well as feet and hand massages. This will also be offered on other Hubs where available.

Concord, Nailsworth

Concord Hub is a hive of activity, with a variety course ranging from, arts, crafts, yoga, mindfulness, nail art, DIY. The social committee organise coffee morning, monthly bingo, quizzes, move to the music, and several social events. Concord and GPH do link in with each other to support events on both sites. Working in partnership with Stroud Valleys Project, Concord/ Long Ground successfully received a £10,000 grant from the National Lottery. This grant has enabled Stroud Valleys Project to work alongside the residents to create a wild garden area and to open part of the ground along the riverbank for a footpath, fruit tree planting and shaded spaces with benches. They have also had bird box painting, willow weaving, wheat milling and bread making workshops.



Grange View, Stroud

Grange View (Stroud) is now the fifth Hub, and the residents are enjoying the lovely new space that has been created, meeting daily for chat over a cup of tea and weekly bingo. One of the residents runs a yoga class which is great for the body and mind. I recently held an open day at the Hub to showcase different activities which could be offered to residents and visitors. It was attended by numerous organisations including SDS College, Gloucestershire Carers Hub and SDC's neighbourhood wardens who were able provide residents with advice and information about their services.



New Developments on Former Sheltered Sites



Ringfield Close, Nailsworth

Works completed at Ringfield Close in June 2022. The former sheltered housing site is now made up of 20 new affordable homes comprising 15 houses and flats for affordable rent, and five houses and bungalows for shared ownership.

The new homes are all highly energy efficient and are Energy Performance Certificate 'A' rated which is significantly above the Building Regulations. The new homes include renewable technologies such as Air Source Heat Pumps and PV panels to help reduce both the carbon emissions and the running costs for the occupiers.



Glebelands, Cam

Planning permission was granted for redevelopment of the site in April 2022. This will enable us to deliver 23 new affordable homes.

The redevelopment excludes the 8 flats at Glebelands, which are located opposite the site, these will remain as Independent Living homes.

These consist of a mix of rented and shared ownership homes and are



made up of 8 x 1-bed flats (the 4 ground floor flats are for older people or those with reduced mobility), 10 x 2-bed houses and 5 x 3-bed houses. This is an exciting new development providing much needed affordable housing in Cam.

We have started preliminary works on the site, with demolition scheduled to commence shortly.

Cambridge House, Dursley

Planning permission was granted in November 2021 to demolish the existing buildings and build 13 new energy efficient homes on the site. The homes will be a mixture of 2 and 3 bed houses and will all be for affordable rent. Enabling works and demolition have begun on site.