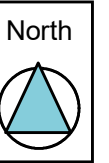
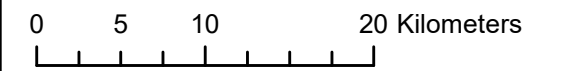
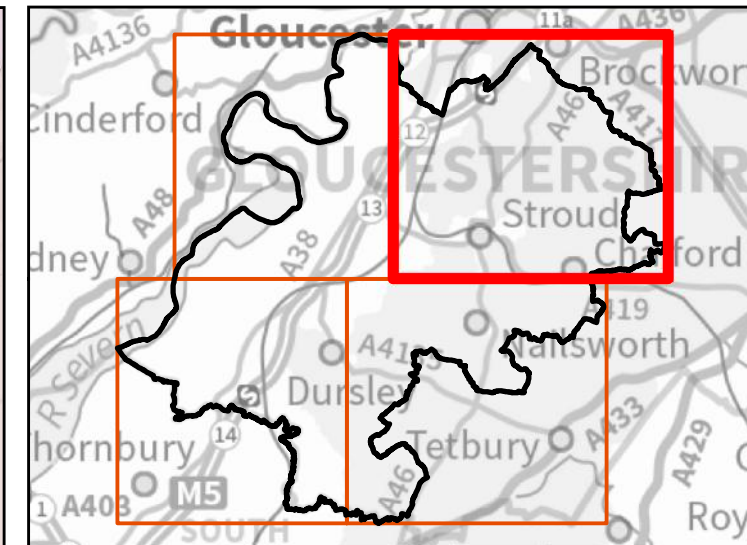
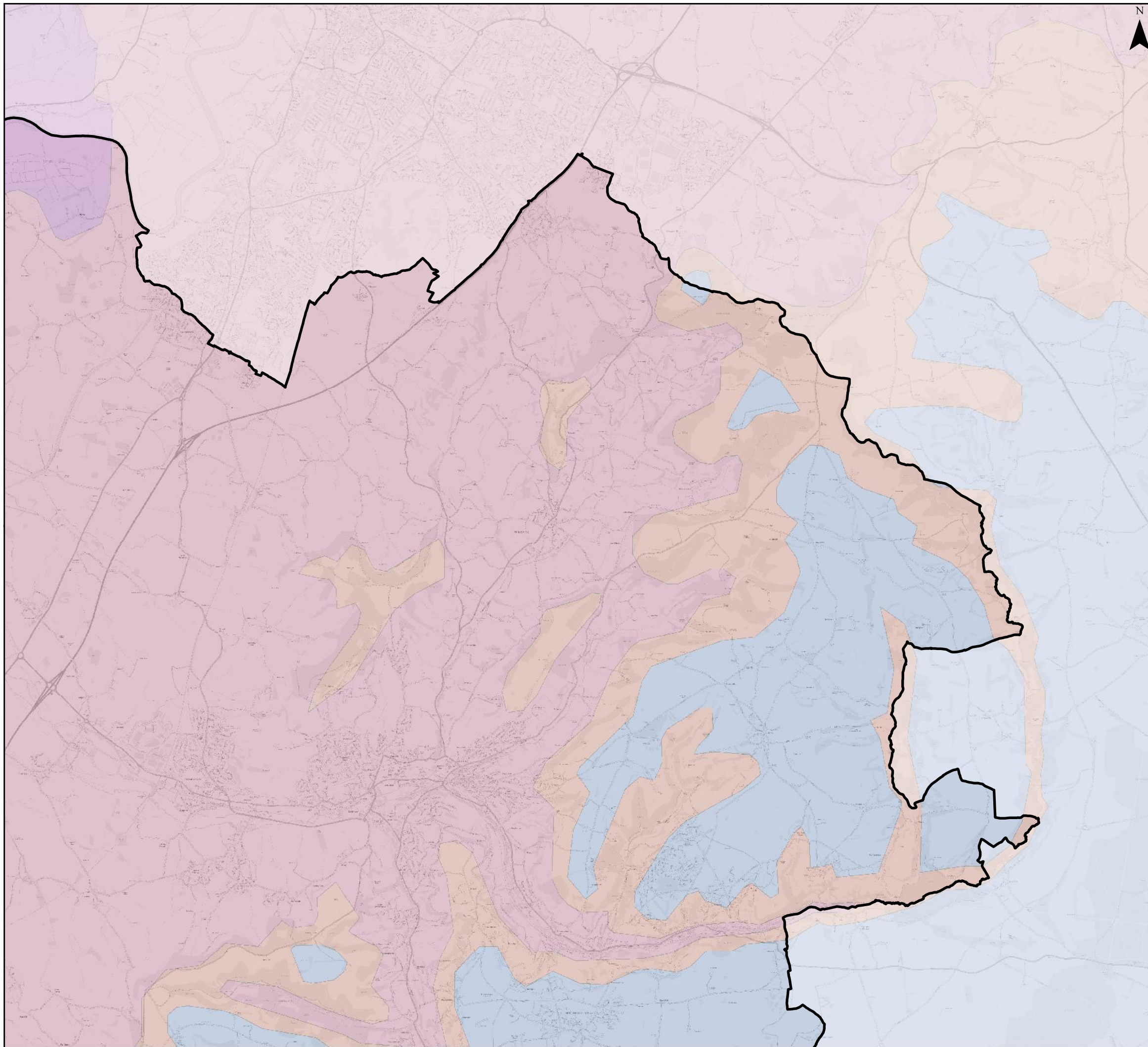


Contains Ordnance Survey data © Crown copyright and database right 2019.
 © Environment Agency copyright and/or database right 2019. All rights reserved. © Crown copyright and database rights 2019 Ordnance Survey 100024198
 Based upon 625k Bedrock Geology, with the permission of the British Geological Survey






- | | |
|-----------------------------------------|-------------------------------------------|
| Stroud District Boundary | PRIDOLI ROCKS (UNDIFFERENTIATED) |
| Bedrock Geology | SOUTH WALES UPPER COAL MEASURES FORMATION |
| DINANTIAN ROCKS (UNDIFFERENTIATED) | TREMADOC ROCKS (UNDIFFERENTIATED) |
| GREAT OOLITE GROUP | TRIASSIC ROCKS (UNDIFFERENTIATED) |
| INFERIOR OOLITE GROUP | UPPER DEVONIAN ROCKS (UNDIFFERENTIATED) |
| LIAS GROUP | WENLOCK ROCKS (UNDIFFERENTIATED) |
| LLANDOVERY ROCKS (UNDIFFERENTIATED) | |
| LOWER DEVONIAN ROCKS (UNDIFFERENTIATED) | |
| LUDLOW ROCKS (UNDIFFERENTIATED) | |

Stroud Strategic Flood Risk Assessment - Appendix C - Bedrock Geology



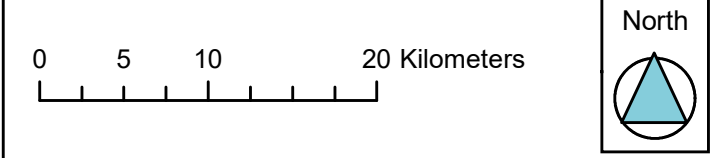
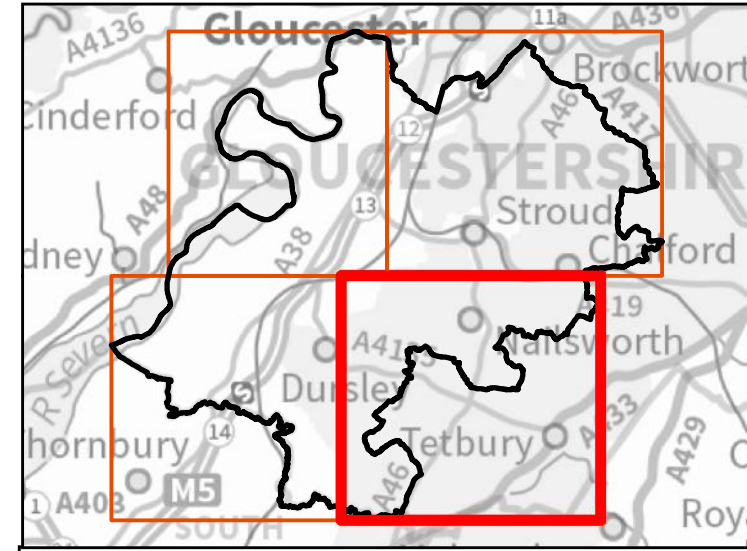
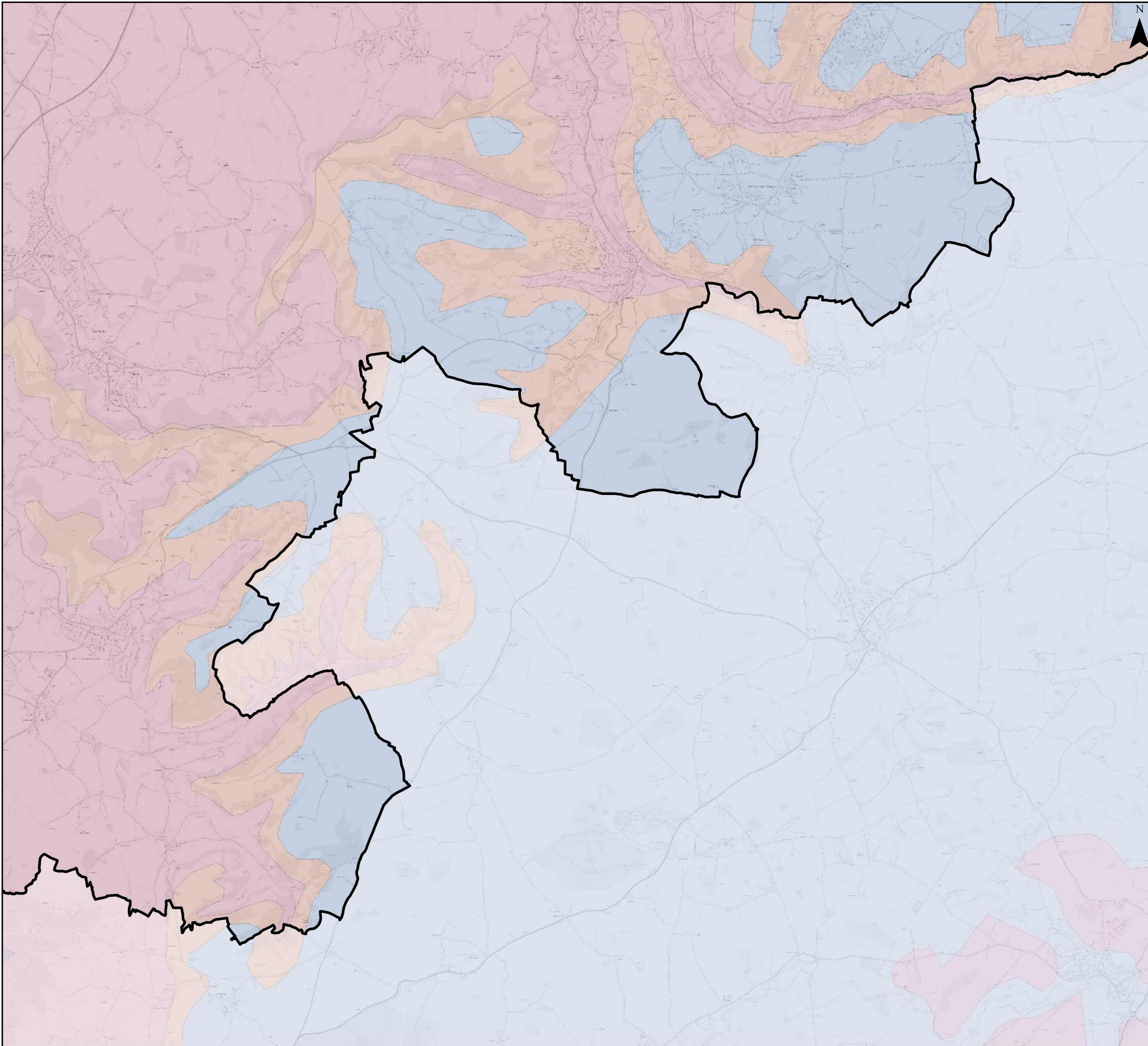


Contains Ordnance Survey data © Crown copyright and database right 2019.
 © Environment Agency copyright and/or database right 2019. All rights reserved. © Crown copyright and database rights 2019 Ordnance Survey 100024198
 Based upon 625k Bedrock Geology, with the permission of the British Geological Survey

- | | |
|----------------------------------------------------------------------------------------------------------------|-------------------------------------------------------------------------------------------------------------------------|
|  Stroud District Boundary |  INFERIOR OOLITE GROUP |
| Bedrock Geology |  LIAS GROUP |
|  GREAT OOLITE GROUP |  TRIASSIC ROCKS (UNDIFFERENTIATED) |

Stroud Strategic Flood Risk Assessment - Appendix C - Bedrock Geology



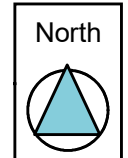
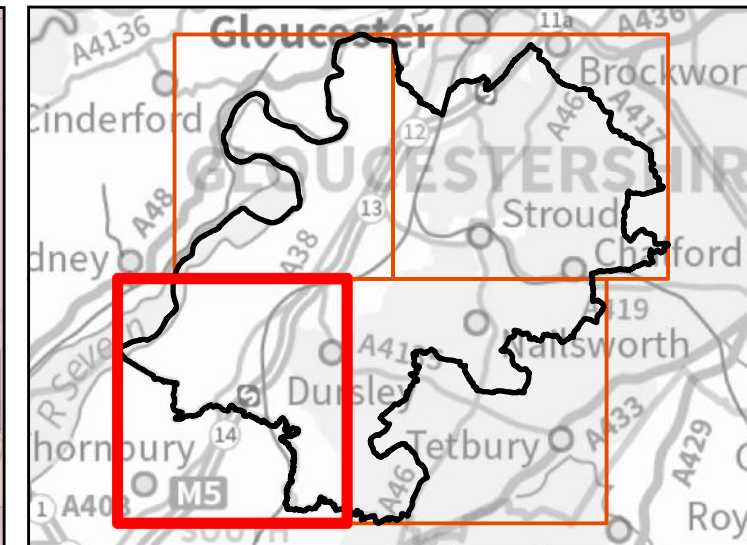
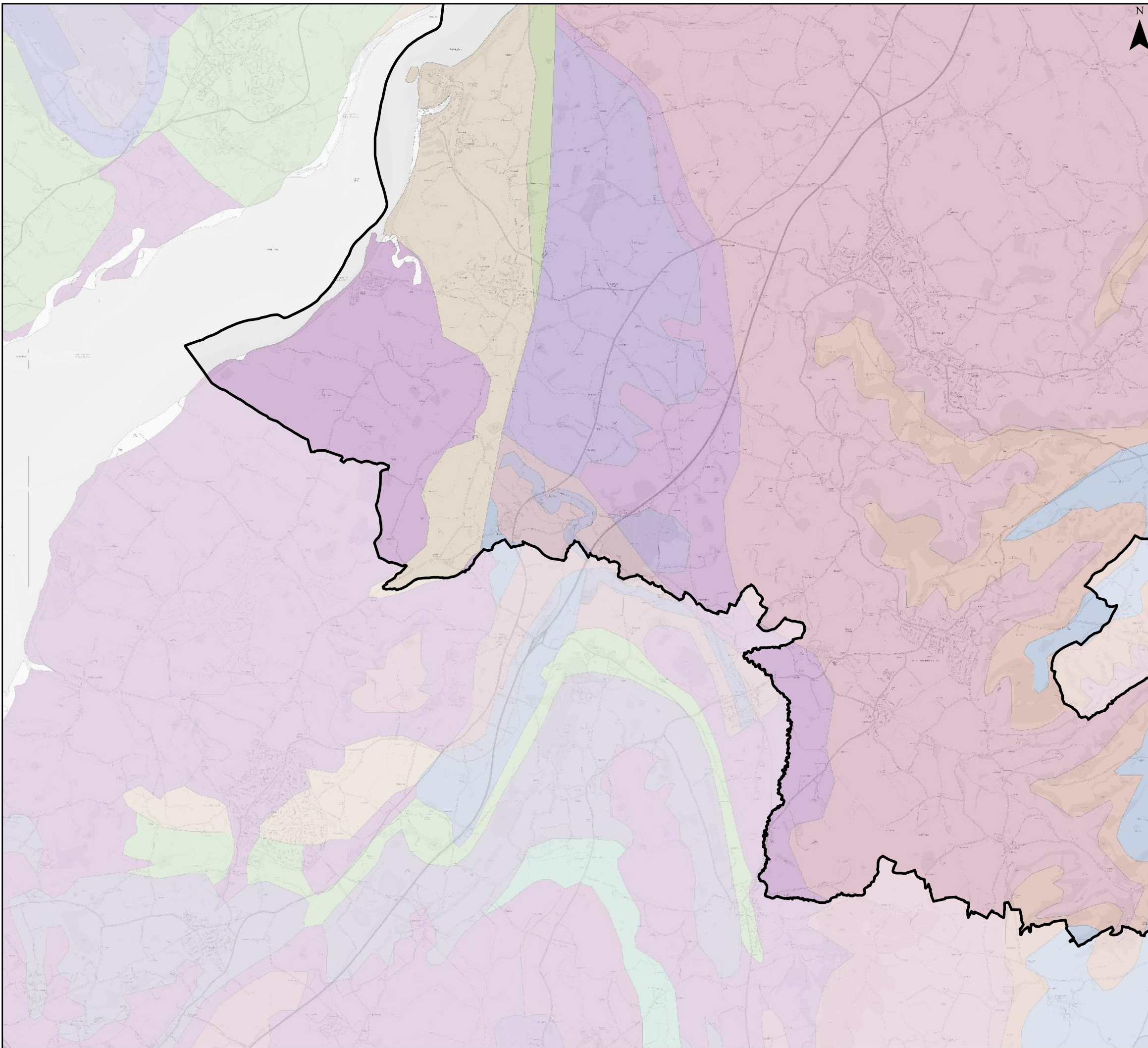


Contains Ordnance Survey data © Crown copyright and database right 2019.
 © Environment Agency copyright and/or database right 2019. All rights reserved. © Crown copyright and database rights 2019 Ordnance Survey 100024198
 Based upon 625k Bedrock Geology, with the permission of the British Geological Survey

- Stroud District Boundary
- Bedrock Geology**
- GREAT OOLITE GROUP
- INFERIOR OOLITE GROUP
- KELLAWAYS FORMATION AND OXFORD CLAY FORMATION (UNDIFFERENTIATED)
- LIAS GROUP
- TRIASSIC ROCKS (UNDIFFERENTIATED)

Stroud Strategic Flood Risk Assessment - Appendix C - Bedrock Geology





Contains Ordnance Survey data © Crown copyright and database right 2019.
 © Environment Agency copyright and/or database right 2019. All rights reserved. © Crown copyright and database rights 2019 Ordnance Survey 100024198
 Based upon 625k Bedrock Geology, with the permission of the British Geological Survey

Stroud District Boundary	
Bedrock Geology	
DINANTIAN ROCKS (UNDIFFERENTIATED)	PENNINE LOWER COAL MEASURES FORMATION AND SOUTH WALES LOWER COAL MEASURES FORMATION (UNDIFFERENTIATED)
GREAT OOLITE GROUP	PRIDOLI ROCKS (UNDIFFERENTIATED)
INFERIOR OOLITE GROUP	SILURIAN ROCKS (UNDIFFERENTIATED)
LIAS GROUP	SOUTH WALES UPPER COAL MEASURES FORMATION
LLANDOVERY ROCKS (UNDIFFERENTIATED)	TREMADOC ROCKS (UNDIFFERENTIATED)
LOWER DEVONIAN ROCKS (UNDIFFERENTIATED)	TRIASSIC ROCKS (UNDIFFERENTIATED)
LUDLOW ROCKS (UNDIFFERENTIATED)	UNNAMED EXTRUSIVE ROCKS, SILURIAN
MILLSTONE GRIT GROUP [SEE ALSO MIGR]	UPPER DEVONIAN ROCKS (UNDIFFERENTIATED)
	WENLOCK ROCKS (UNDIFFERENTIATED)

Stroud Strategic Flood Risk Assessment - Appendix C - Bedrock Geology