

- Site Boundary
- Target Note
- Trees
- - - Dry Ditch
- Running Water
- ||||| Fence
- ~ ~ ~ Native Species-Rich Hedge
- ~ ~ ~ Native species-rich hedge and trees
- Species-Poor Hedge
- A Arable
- SL Improved Grassland
- / / / Broadleaved Plantation Woodland
- Building
- Hardstanding

0 250 500  
 ─────────── m

Source: Esri, Maxar, GeoEye, Earthstar Geographics, CNES/Airbus DS, USDA, USGS, AeroGRID, IGN, and the GIS User Community

1:6,000 @ A3	Date: 11/06/2021
Drawn: IB	Checked: DM
Figure 01	Rev A



Employment Block 1  
0.7ha

11.19ha

3.06ha

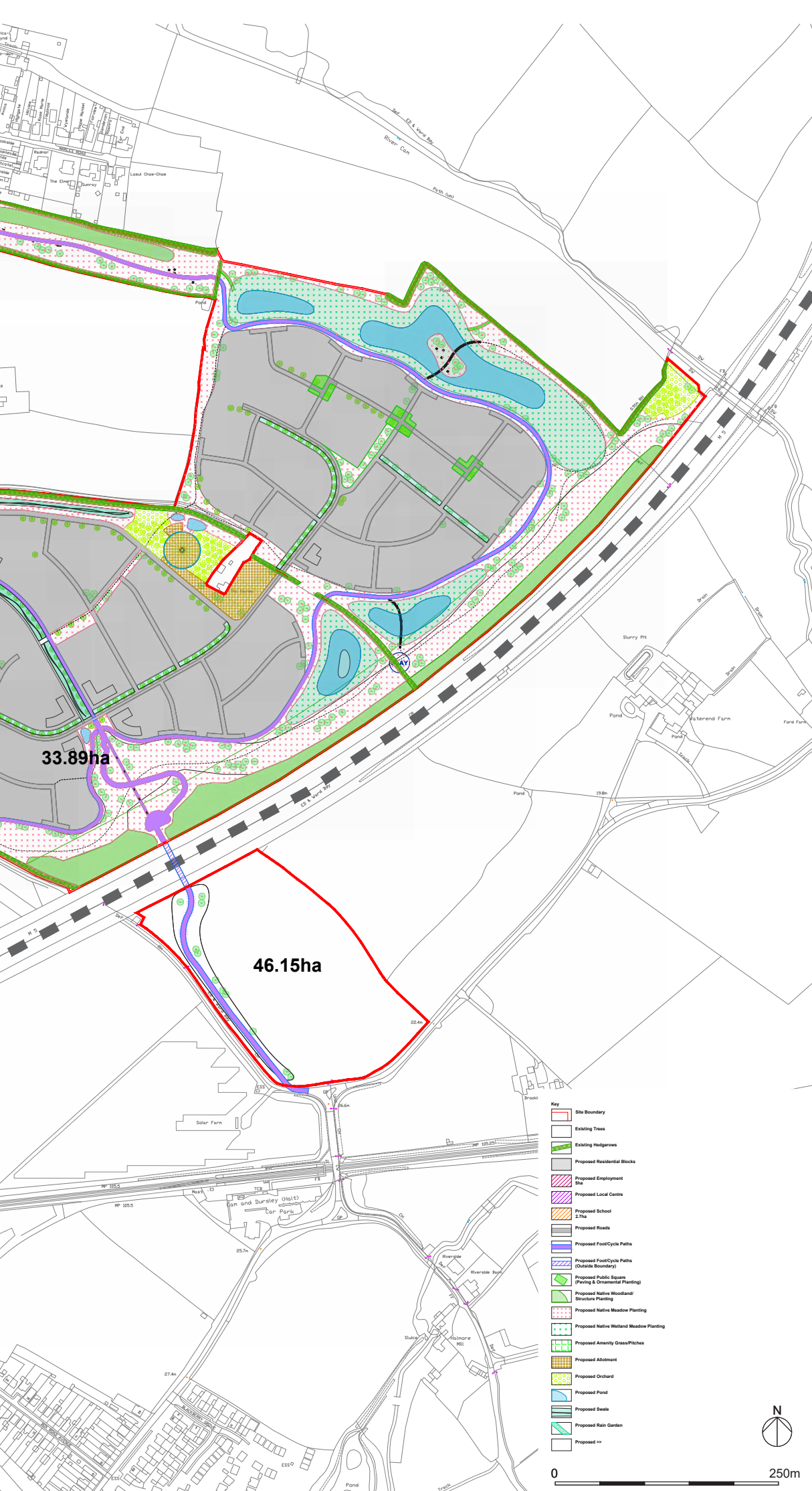
28.79ha

Employment Block 2  
4.0ha

Existing Stream

Mounding with Native  
Structure Planting





- Key**
- Site Boundary
  - Existing Trees
  - Existing Hedgerows
  - Proposed Residential Blocks
  - Proposed Employment Site
  - Proposed Local Centre
  - Proposed School
  - Proposed Roads
  - Proposed Foot/Cycle Paths
  - Proposed Foot/Cycle Paths (Outside Boundary)
  - Proposed Public Square (Paving & Ornamental Planting)
  - Proposed Native Woodland/Structure Planting
  - Proposed Native Meadow Planting
  - Proposed Native Wetland Meadow Planting
  - Proposed Amenity Grass/Pitches
  - Proposed Allotment
  - Proposed Orchard
  - Proposed Pond
  - Proposed Swale
  - Proposed Rain Garden
  - Proposed >>



0 250m

DRAFT

#	REV	DATE	#	COMMENTS	#	#
PROJECT TITLE						
Wisloe						
DETAIL						
BNG Calculation Plan						
DRAWING NUMBER						
PROJECT COORDINATOR (LINE LEVEL) PROJECT NUMBER						
WIS -LHC-00-00-DR-UD-01.03						
STATUS						
S2 FOR INFORMATION						
REVISION						
X June 2021 1:2500 @A0						
SCALE						
20006						
CONTRACTORS MUST CHECK ALL DIMENSIONS ON SITE. ONLY IF REQUIRED DIMENSIONS ARE TO BE WORKED FROM. DIMENSIONS MUST BE REPORTED TO THE ARCHITECT BEFORE PROCEEDING @ THIS DRAWING IS COPYRIGHT.						
LHC PROJECT NUMBER						
20006						

**31** MASTER  
0130 44424

PL NEEDED  
0152 00305

BY AUSTELL  
0152 21420

lhc.net



## TECHNICAL NOTE

### Appendix A Summary of Metric Results

<b>On-site baseline</b>	<i>Habitat units</i>	155.74
	<i>Hedgerow units</i>	53.40
	<i>River units</i>	0.00
<b>On-site post-intervention</b> (Including habitat retention, creation, enhancement & succession)	<i>Habitat units</i>	181.85
	<i>Hedgerow units</i>	65.82
	<i>River units</i>	0.00
<b>Off-site baseline</b>	<i>Habitat units</i>	0.00
	<i>Hedgerow units</i>	0.00
	<i>River units</i>	0.00
<b>Off-site post-intervention</b> (Including habitat retention, creation, enhancement & succession)	<i>Habitat units</i>	0.00
	<i>Hedgerow units</i>	0.00
	<i>River units</i>	0.00
<b>Total net unit change</b> (including all on-site & off-site habitat retention/creation)	<i>Habitat units</i>	26.11
	<i>Hedgerow units</i>	12.42
	<i>River units</i>	0.00
<b>Total net % change</b> (including all on-site & off-site habitat creation + retained habitats)	<i>Habitat units</i>	16.76%
	<i>Hedgerow units</i>	23.25%
	<i>River units</i>	0.00%

<b>On-site habitat retention and enhancement</b>			
	Habitats	Hedgerows	Rivers
Total site area / length	78.24	5.56	0.00
Total site units	155.74	53.40	0.00
Area / length retained	0.18	4.15	0.00
Units Retained	0.72	42.68	0.00
Area / length enhanced	0.00	1.00	0.00
Baseline units enhanced	0.00	4.60	0.00
Area / length succession	0.00		
Units succession	0.00		
Area / length lost	78.06	0.41	0.00
Units lost	155.02	6.12	0.00

<b>lost by distinctiveness</b>		
Category	Area lost (hectares)	Area lost (%)
V.High	0	
High	0	
Medium	0.14	0
Low	77.23	100
V.Low	0	

THIS PAGE IS LEFT INTENTIONALLY BLANK FOR DOUBLE SIDED PRINTING

□ lhc design



 Stantec

Social

 savills