







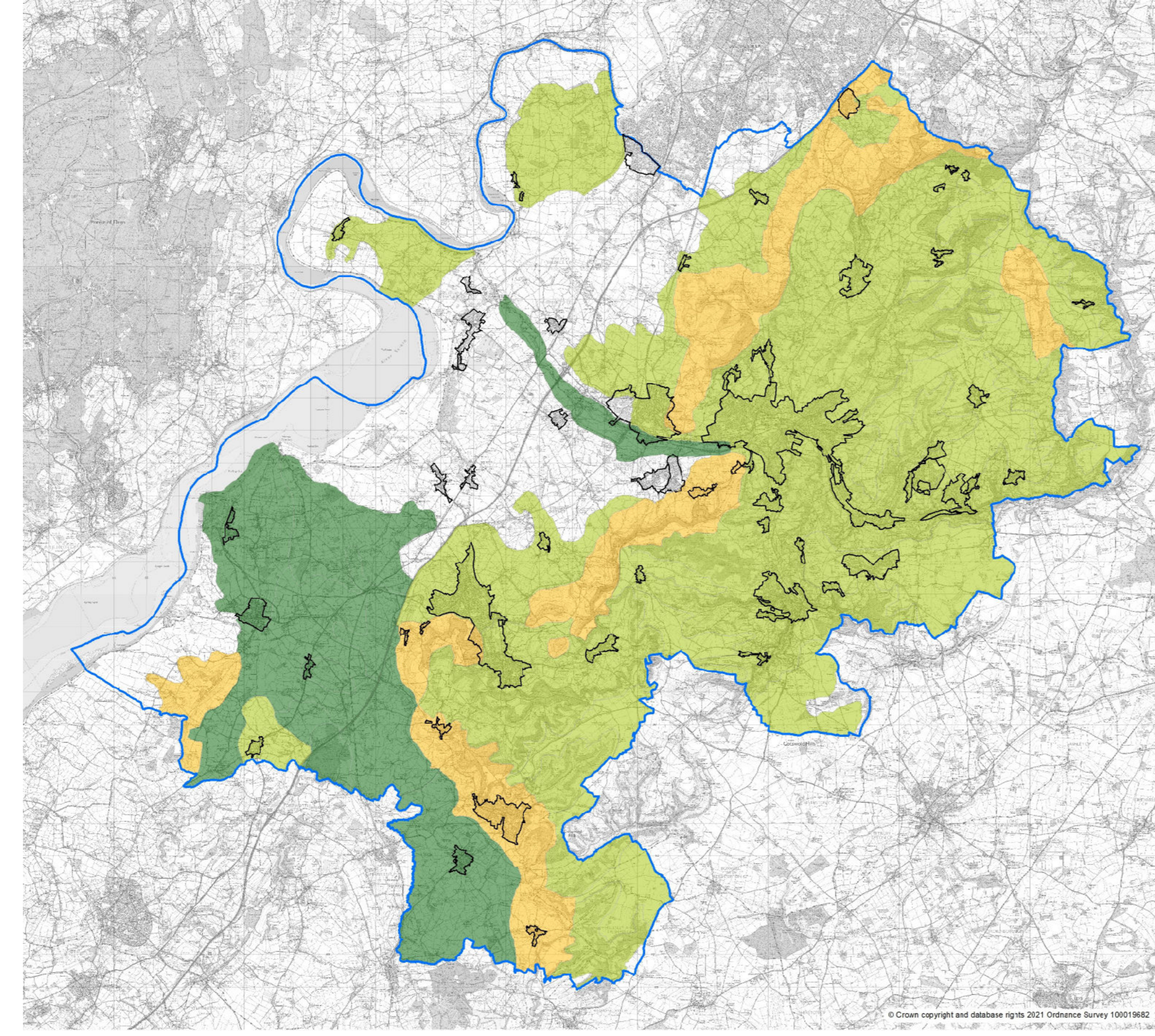
**Stroud District | Local Plan Review**

**Submission Policies Map E: Landscape sensitivity to solar and wind renewable energy development**

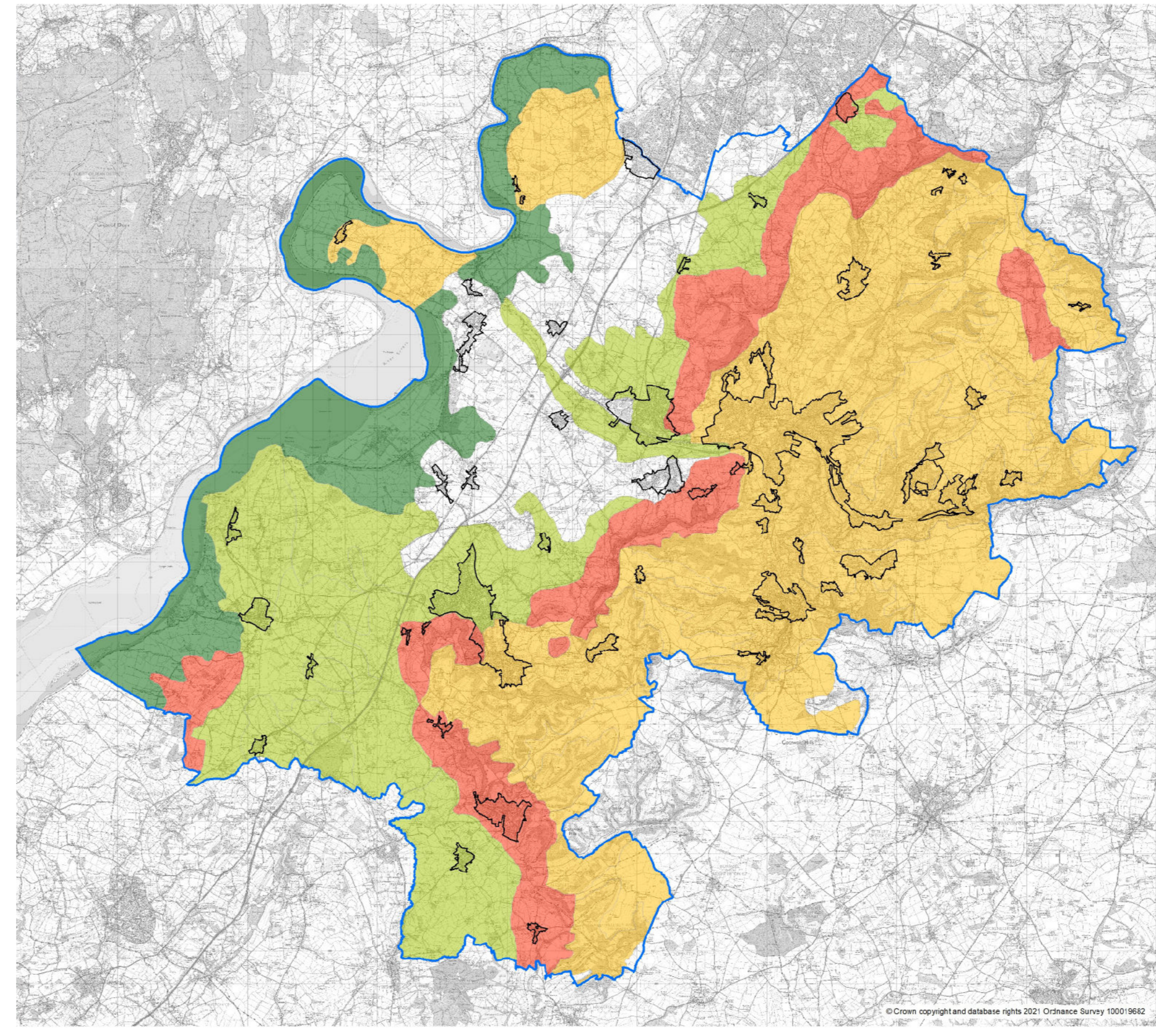
October 2021

-  Stroud District
-  (CP3) Settlement Development Limits
- Landscape sensitivity to solar and wind renewable energy development (ES2)
- Sensitivity colour scale:
-  Low-Medium (L-M)
-  Medium (M)
-  Medium-High (M-H)
-  High (H)

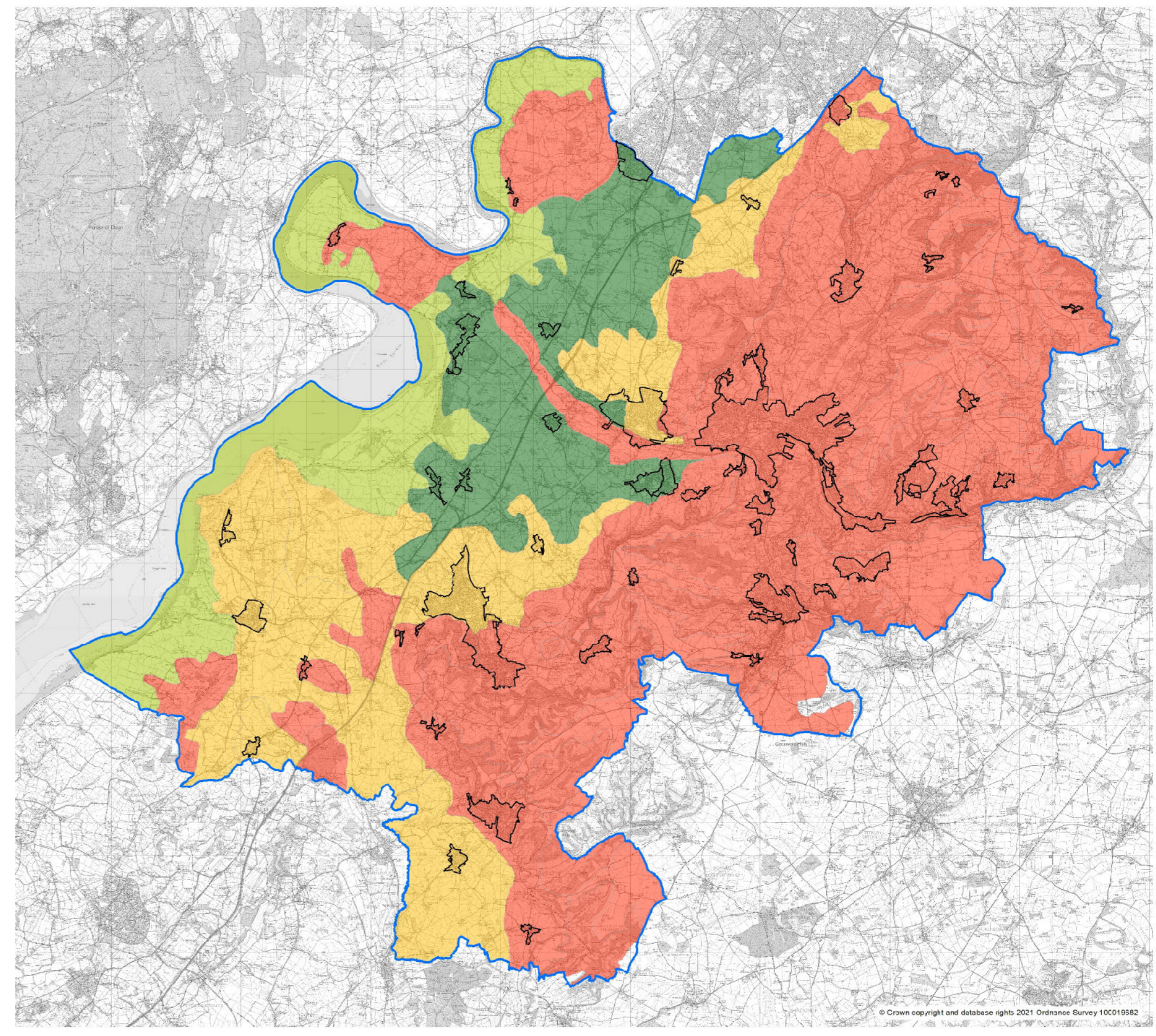
© Crown copyright and database rights 2021 Ordnance Survey 100019682



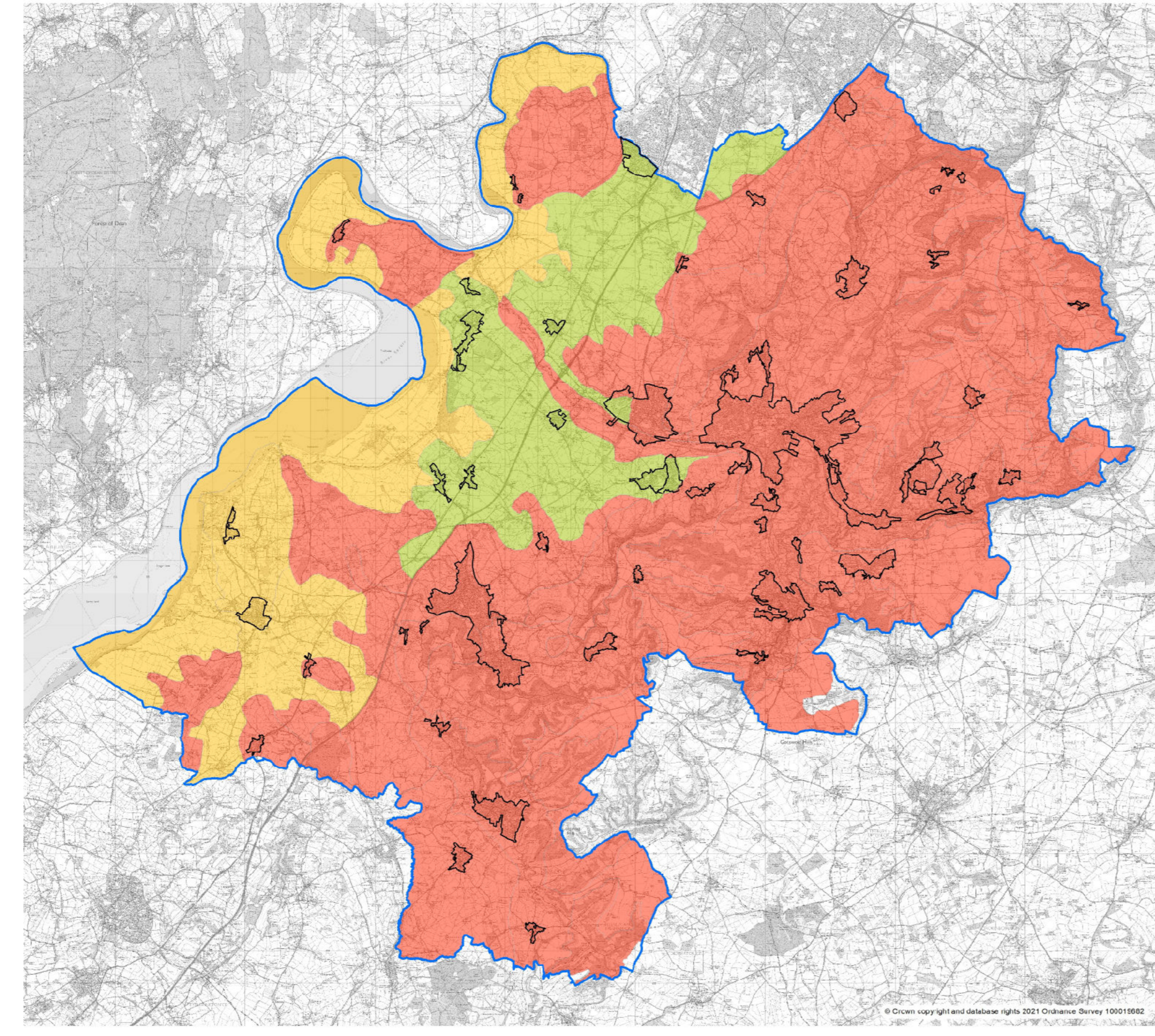
**E1: Landscape sensitivity to small scale solar energy development**



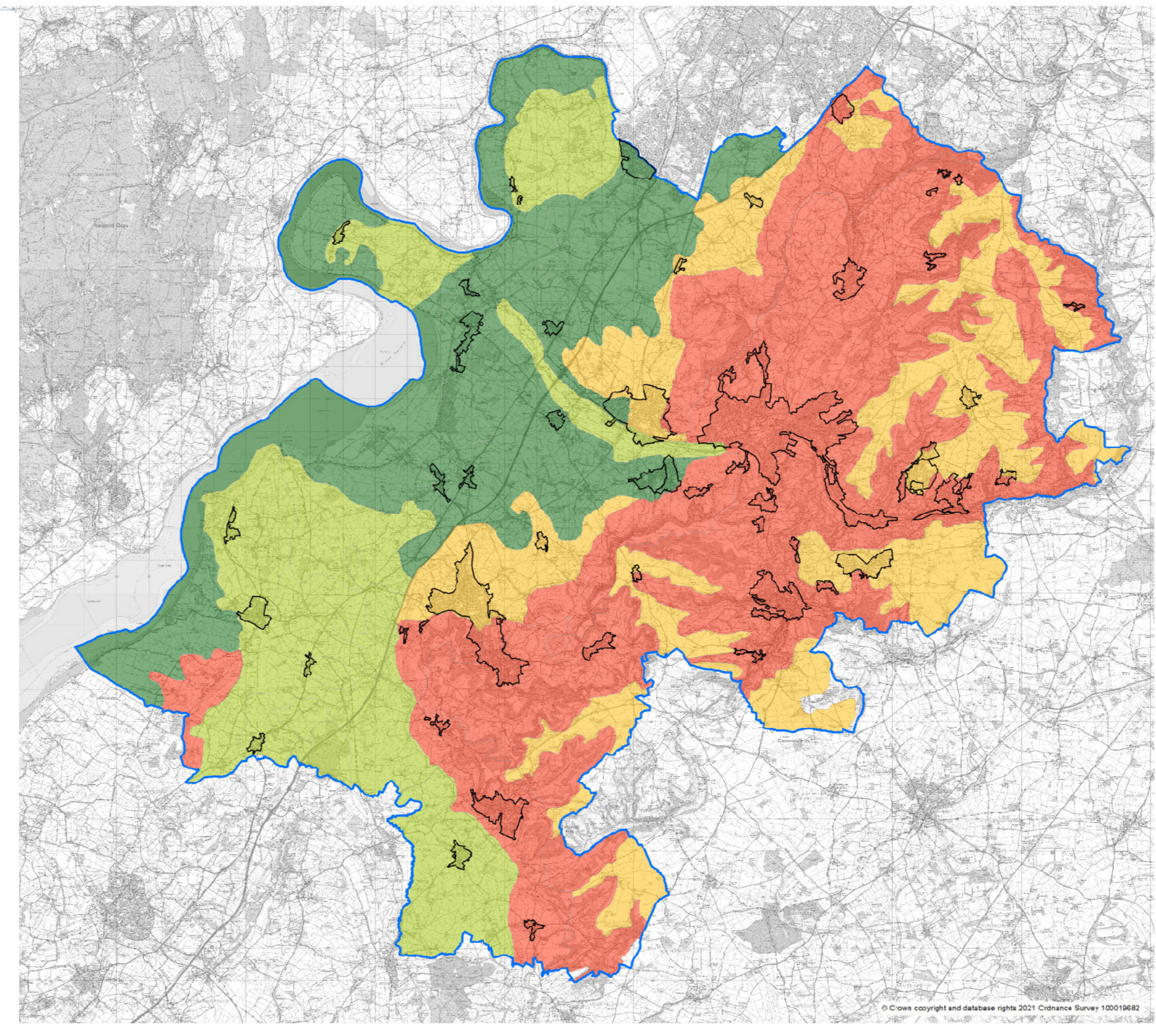
**E2: Landscape sensitivity to medium scale solar energy development**



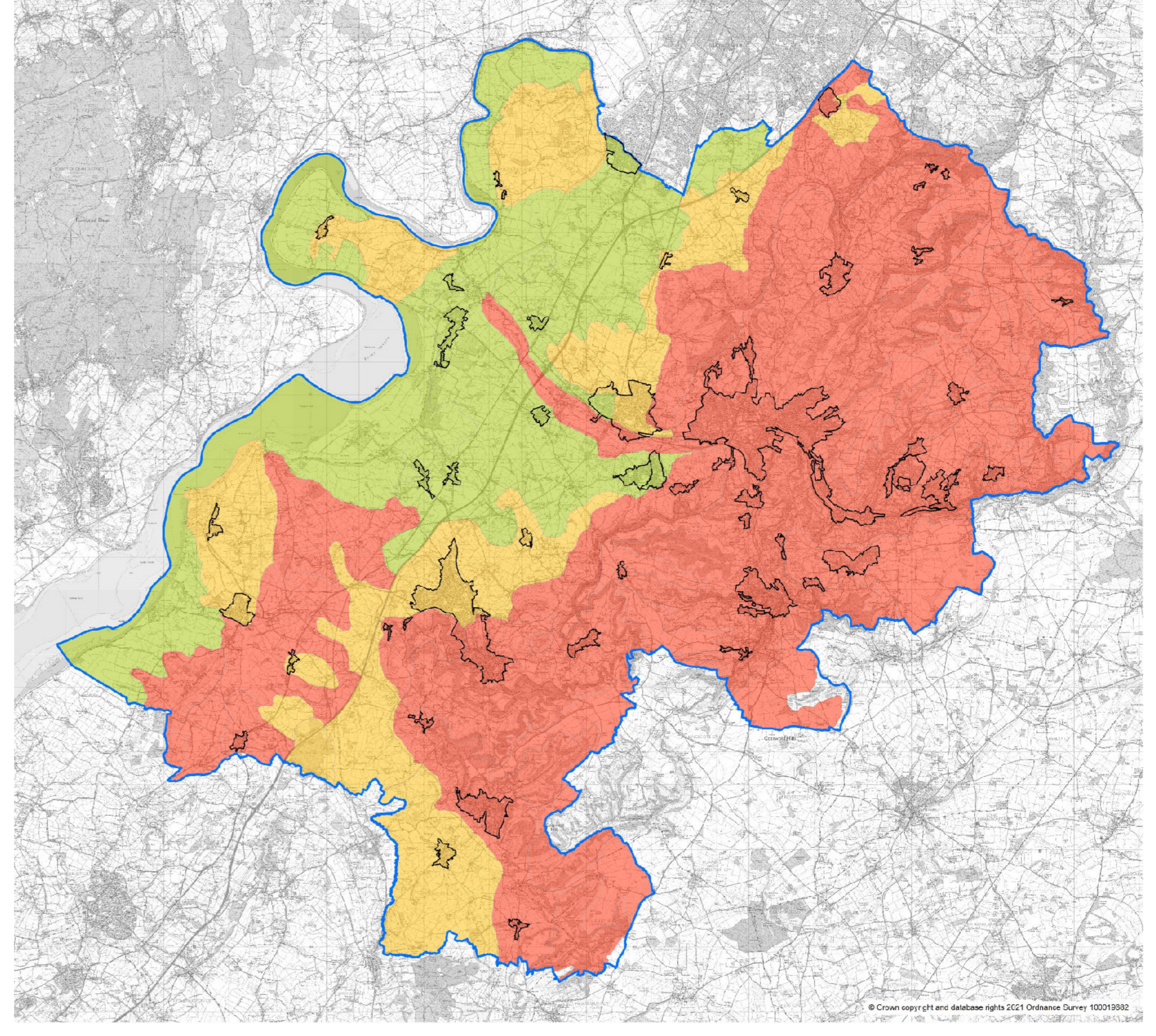
**E3: Landscape sensitivity to large scale solar energy development**



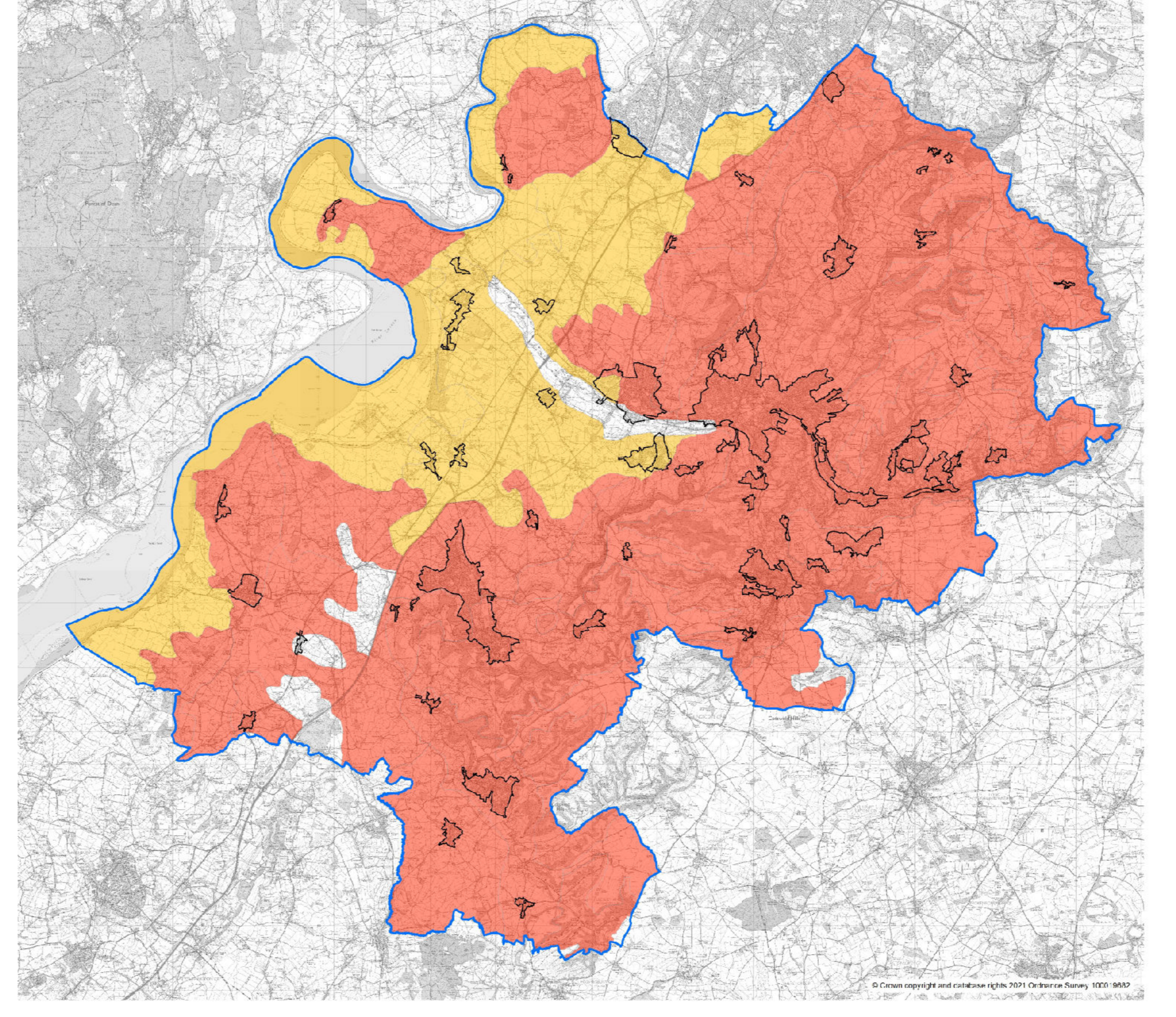
**E4: Landscape sensitivity to very large scale solar energy development**



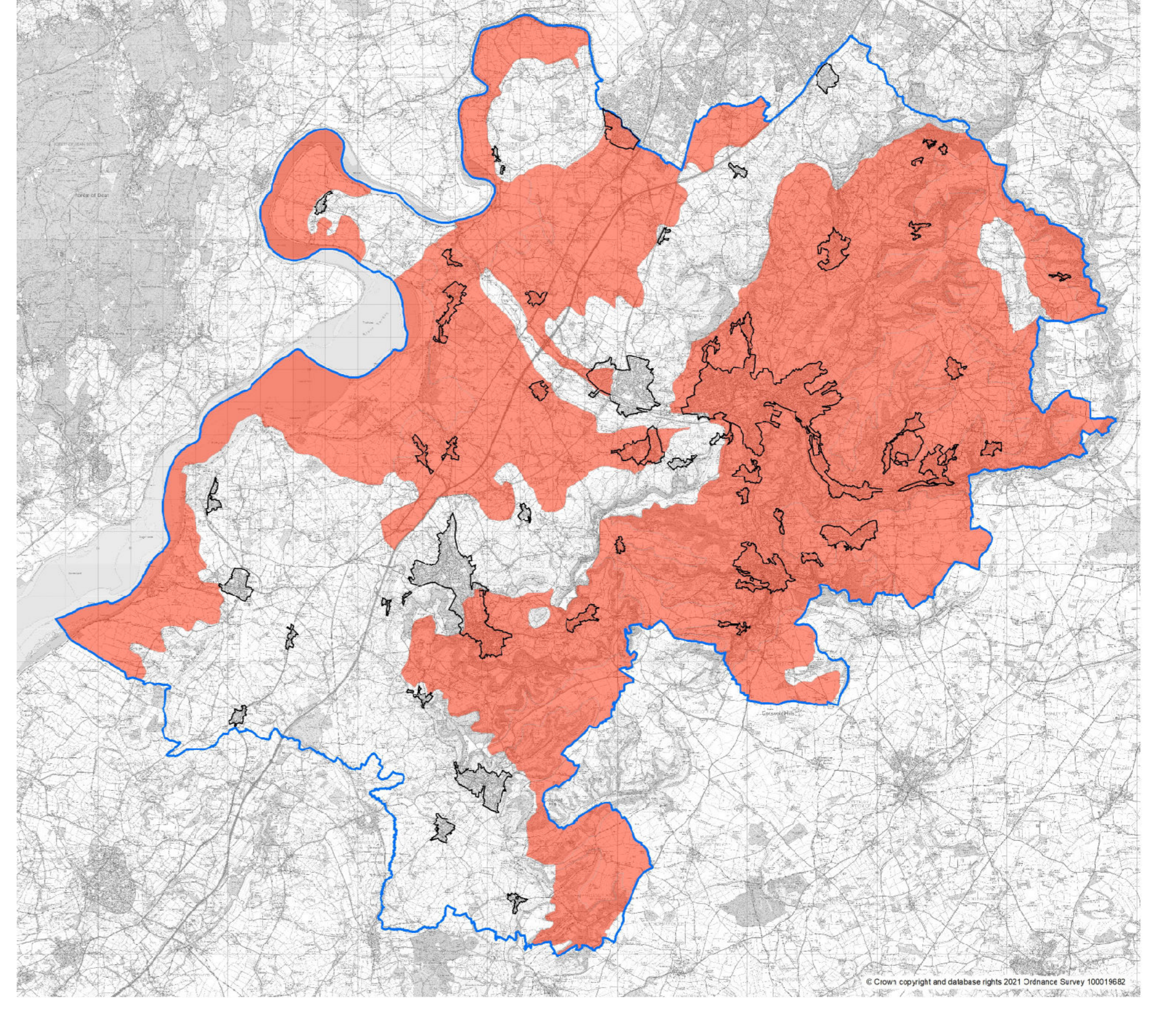
**E5: Landscape sensitivity to small scale wind turbine development**



**E6: Landscape sensitivity to medium scale wind turbine development**



**E5: Landscape sensitivity to large scale wind turbine development**



**E6: Landscape sensitivity to very large scale wind turbine development**

[www.stroud.gov.uk/localplanreview](http://www.stroud.gov.uk/localplanreview)